

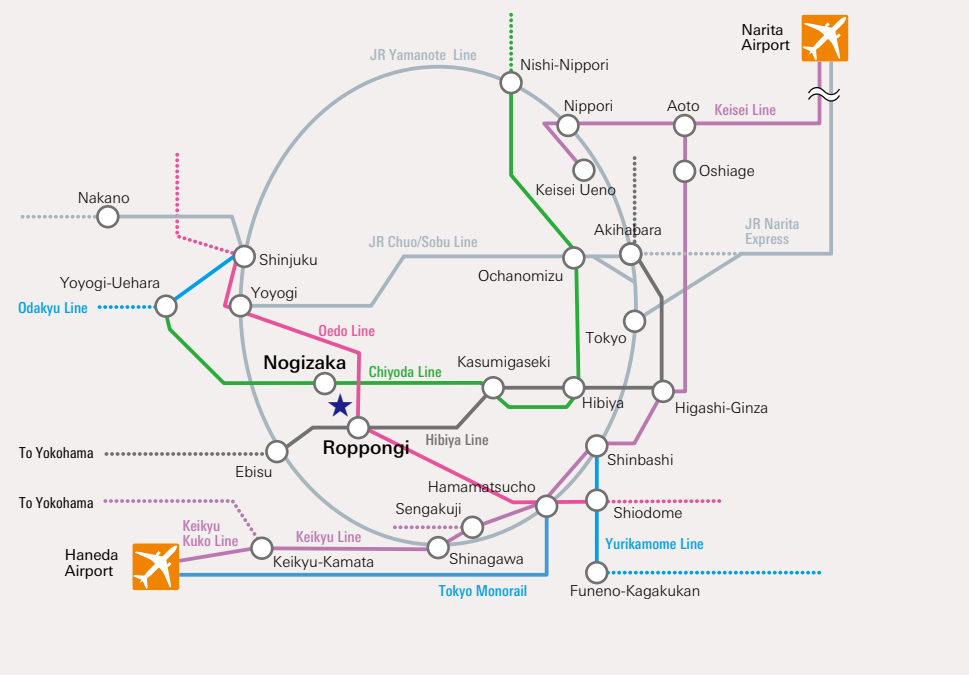
**Address and Contact Information**

**Getting to GRIPS**

The GRIPS building is located in the center of Tokyo, conveniently accessible by public transport. Both Nogizaka Station on the Chiyoda Line and Roppongi Station on the Oedo and Hibiya Lines are within 10 minutes walking distance.



Roppongi Hills



**National Graduate Institute for Policy Studies**

7-22-1 Roppongi, Minato-ku, Tokyo 106-8677 Japan  
 Tel: +81-(0)3-6439-6000 Fax: +81-(0)3-6439-6010  
<http://www.grips.ac.jp>

**Admissions office**

Tel: +81-(0)3-6439-6046 Fax: +81-(0)3-6439-6050  
[admissions@grips.ac.jp](mailto:admissions@grips.ac.jp)

Gateway to  
Global Leadership



**Japan-WCO Human Resource Development Programme**

**Public Finance Program  
Customs Course**



政策研究大学院大学  
NATIONAL GRADUATE INSTITUTE  
FOR POLICY STUDIES



# 1 Program Description

## Public Finance Program (Customs Course)

### Contents

1 Program Description .....	1
2 About GRIPS .....	11
3 Student Support .....	13
4 Admissions .....	15
5 Alumni .....	16

Address and Contact Information

### Overview and Program Objectives

Since 2000, the Customs Course at GRIPS (as part of the Public Finance Master's Degree program) has cultivated promising customs officials. The major objective of the Public Finance Program is to provide students with the conceptual understanding and technical competence to become leaders in the area of taxation and customs. The curriculum is designed for government officials from developing countries, who currently work in customs or tax administration. The program is a 13-month course comprised of two segments: an academic segment common to customs and tax students, and a practicum segment (internship) that is conducted separately for customs and tax depending on the student's stream/concentration.

### Degree Requirements

- The curriculum is comprised of three course categories: required courses, highly recommended elective courses, and other elective courses. Students in the Customs Course must complete a minimum of 36 credits, 20 of which are made up of required courses.
- Besides the minimum credit requirements stated above, students must complete and obtain approval for a master's thesis.

### Academic Segment

The academic segment provides a rigorous economics-oriented education aimed at developing a broad understanding of the theoretical, empirical, and institutional aspects of customs/tax policy implementation and administration, in the context of developing countries economic and social development. The academic segment culminates in the writing of a master's thesis facilitated by a course in which students develop their thesis with the input of academic supervisors and their peers, in which they have several opportunities to present their research.

### Practicum Segment

The practicum segment of the Customs Course is provided by Japan's Customs Training Institute (CTI: WCO Regional Training Centre), Customs and Tariff Bureau of the Ministry of Finance. It involves workshops and seminars, and visits to regional customs bureaus. These experiences give students opportunities to enhance their learning with hands-on activities in a customs related work environment, integrating practical experience with their formal learning.



Photo : Kinio Nishikawa

Photo : Kinio Nishikawa



## Outline of the Curriculum

### September Program

One academic year at GRIPS is composed of four terms: fall (16 weeks), winter (8 weeks), spring (16 weeks), and summer (8 weeks). Although the formal academic term starts in October, students in the Customs Course are invited to arrive in early September, and attend supplementary classes to brush up on their basic mathematical and statistical skills, which will help them grasp the micro-foundations of economics and the basis for empirical analysis. They also attend classes on basic Japanese, and special four-day program as part of the practicum.

### September Program for AY2011-2012

	AM(9:00~12:00)		12:10~13:20	PM(13:20~16:30)	
6 Tue	Arrival in Japan				
7 Wed	Guidance by GRIPS ,Handing out PC for students			Econ-Math	Econ-Math
8 Thu	Japanese Language	Japanese Language	welcome party sponsored by WCO	Econ-Math	Econ-Math
9 Fri	Japanese Language	Japanese Language		Econ-Math	Econ-Math
10 Sat	Day off				
11 Sun	Day off				
12 Mon	Program by CTI (orientation/guided tour of CTI, role of WCO and the contribution of Japan, Japan Customs)				
13 Tue	Program by CTI (Customs clearance, organizational management, training system, visits to Central Customs Laboratory)				
14 Wed	Program by CTI				
15 Thu	Japanese Language	Japanese Language		Econ-Math	
16 Fri	Japanese Language	Japanese Language		Seeing Graduation Ceremony	
17 Sat	Day off				
18 Sun	Day off				
19 Mon	Day off (National Holiday)				
20 Tue	Japanese Language	Japanese Language			Customs Law
21 Wed				Econ-Math	Econ-Math
22 Thu				Customs Law	
23 Fri	Day off (National Holiday)				
24 Sat	Day off				
25 Sun	Day off				
26 Mon	Program by CTI (courtesy visit on executives, outline of Tokyo Customs)			Program by CTI	
27 Tue	Program by CTI			Program by CTI	
28 Wed				Econ-Math	
29 Thu				Customs Law	Customs Law

### Formal Academic Program

The formal academic segment of the master's program begins in October. It starts with focused teaching of foundational skills in micro- and macroeconomics as well as quantitative analysis. It then moves to a range of applied topics which help students understand how to design, implement, and evaluate public policies -- customs policy in particular -- in accordance with development strategies. Topics include public finance, international economics, development economics, human resource management, customs laws, and tax laws. See the list of course offerings and the flow chart for the AY2011-2012 on the following pages.

In addition to the required and strongly recommended elective courses, students can choose freely throughout the year from any of the extensive list of courses offered at GRIPS. Along with economics courses, GRIPS also offers numerous courses in various academic areas that are conducted in English. These range from public administration, political science, international relations, mathematical science, and social engineering, to a diverse range of interdisciplinary fields. Students can also choose to enroll in the Japanese language courses offered throughout the year at various levels of proficiency.

### Practicum Program

The main part of the practicum starts in the winter term. It involves seminars and workshops that cover the theory and practice of international trade, as well as customs policy and administration. It also involves visits to regional customs bureaus, and final preparations for student papers that are presented to, and discussed with CTI teaching staff.

### Master's Thesis

There is one required course, Workshop in Public Finance, that students must enroll from spring through summer term, which are devoted to producing the master's thesis (or "policy paper") on a topic related to public finance. In this course, students are provided with personal instruction in an intimate environment by a faculty advisor, and several opportunities to present both their ongoing and completed research papers. Students are supported in the writing process by a monthly Academic Writing Workshop that starts in October, as well as through individual consultation with faculty members of the GRIPS Academic Writing Center.

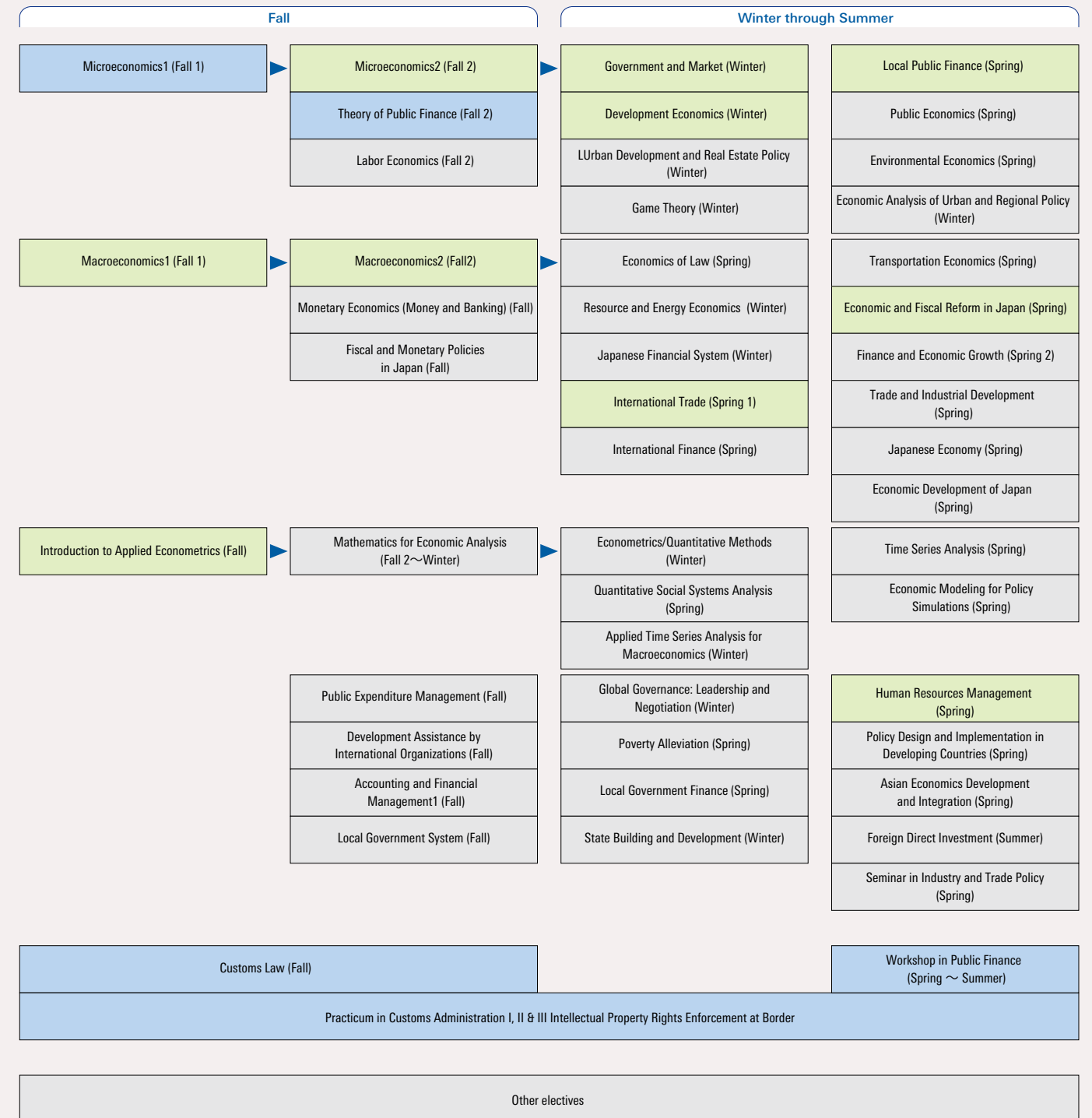


## Course Offerings for AY2011-2012

Category	Course No.	Course Name	Term	Credit	
<b>I Required Courses</b>	PFP250E	Customs Law	Fall	2	
	PFP511E	Practicum in Customs Administration I	Winter	2	
	PFP512E	Practicum in Customs Administration II	Spring	2	
	PFP513E	Practicum in Customs Administration III	Fall (September), Spring	4	
	PFP521E	Intellectual Property Rights Enforcement at Border	Spring (Session I)	2	
	ECO100EC	Microeconomics I	Fall (Session I)	2	
	ECO310E	Theory of Public Finance	Fall (Session II)	2	
<b>II Highly Recommended Elective Courses</b>	ECO410E	Workshop in Public Finance	Spring through Summer	4	
	ECO106EB	Macroeconomics I	Fall (Session I)	2	
	ECO200EC	Microeconomics II	Fall (Session II)	2	
	ECO202EC	Government and Market	Winter	2	
	ECO206EB	Macroeconomics II	Fall (Session II)	2	
	ECO272EC	Introduction to Applied Econometrics	Fall	2	
	ECO315E	Local Public Finance	Spring	2	
	ECO316E	Economic and Fiscal Reform in Japan	Spring	2	
	ECO340E	International Trade	Spring (Session I)	2	
	ECO384E	Development Economics	Winter	2	
	PAD256E	Human Resources Management	Spring	2	
	<b>III Other Elective Courses</b>	ECO160E	Monetary Economics (Money and Banking)	Fall	2
		ECO261E	Finance and Economic Growth	Spring (Session II)	2
ECO276E		Applied Time Series Analysis for Macroeconomics	Winter	2	
ECO286E		Poverty Alleviation	Spring	2	
ECO288E		Trade and Industrial Development	Spring	2	
ECO290E		Game Theory	Winter	2	
ECO300E		Mathematics for Economic Analysis	Fall (Session II), Winter	2	
ECO314E		Public Economics	Spring	2	
ECO317E		Labor Economics	Fall (Session II)	2	
ECO320E		Economics of Law	Spring	2	
ECO330E		Urban Economics	Spring	2	
ECO331E		Transportation Economics	Spring	2	
ECO334E		Urban Development and Real Estate Policy	Winter	2	
ECO335E		Economic Analysis of Urban and Regional Policy *	Spring	2	
ECO345E		International Finance	Spring	2	
ECO347E		Empirics of Macroeconomic Policies and International Finance	TBA	2	
ECO351E		Environmental Economics	Spring	2	
ECO353E		Resource and Energy Economics	Winter	2	
ECO361E		Japanese Economy	Spring	2	
ECO363E		Japanese Financial System	Winter	2	
ECO370E		Econometrics/ Quantitative Methods	Winter	2	
ECO371E		Time Series Analysis	Spring	2	
ECO374E		Economic Modeling for Policy Simulations	Spring	2	
ECO381E		Economic Development of Japan	Spring	2	
ECO386E		Asian Economic Development and Integration	Spring	2	
ECO600E		Advanced Microeconomics I	Spring (Session I)	2	
ECO601E		Advanced Microeconomics II	Spring (Session II)	2	
ECO670E		Advanced Econometrics I	Spring (Session I)	2	
ECO671E		Advanced Econometrics II	Spring (Session II)	2	
PFP252E		International Taxation of Japan	Fall	2	
GEN3900E		State Building and Development	Winter	2	
GOV322E		International Political Economy of Money and Finance	Spring	2	
MOR250E		Quantitative Social Systems Analysis	Spring	2	
PAD251E	Accounting and Financial Management I	Fall	2		
PAD254E	Development Assistance by International Organizations	Fall	2		
PAD255E	Foreign Direct Investment	Summer	2		
PAD257E	Seminar in Industry and Trade Policy	Spring	2		
PAD258E	Global Governance: Leadership and Negotiation	Winter	2		
PAD261E	Fiscal and Monetary Policies in Japan	Fall	2		
PAD267E	Public Expenditure Management	Fall	2		
PAD302E	Policy Design and Implementation in Developing Countries	Spring	2		
REG201E	Local Government System	Fall	2		
REG202E	Local Government Finance	Spring	2		
	Selected Topics in Policy Studies I - IV*		2		
Courses unlisted in this table					
	Basic / Intermediate / Advanced Japanese *		Fall through Summer		
	courses offered by the Academic Writing Center*		Fall through Summer		

Note: Courses offered are subject to change.  
\* Credits earned in these courses cannot count toward the degree.

## Flow Chart Core and Other Major Elective Courses



Blue box indicates subjects that are required. Green box indicates subjects that are strongly recommended





## Brief Core Course Descriptions (Academic Segment)

Followings are for category I and II only. For other courses, see <http://www.grips.ac.jp/cstudents/information/syllabus>.

### Microeconomics I

This is an introductory course in microeconomics. It covers basic economic assumptions and concepts used to define behaviors of consumers and firms in markets. The course is comprised of three parts: consumer theory, firm theory, and equilibrium in a competitive market. In consumer theory, preference, utility, budget constraints, utility maximization, and demand curves will

be introduced. In firm theory, production and cost functions, profit maximization, and supply curves will be discussed. Finally, the concept and determination of equilibrium will be analyzed.

### Theory of Public Finance

In "Theory of Public Finance," students will learn both expenditure side and revenue side analyses of public finance theory. This prepares students for "Workshop in Public Finance," in which they are expected to produce a policy paper in the field of public finance.

### Macroeconomics I

This course will cover basic models used to study macroeconomic phenomena. Students will learn models that help them understand the economic behavior of agents in the short and medium-run. We will focus on equilibrium in the goods, financial, and labor markets.

### Microeconomics II

In this course, students analyze how economic agents make optimal decisions when facing uncertainty, asymmetric information, and choices of consumption over time. The course will introduce the basics of game theory, analyzing the interaction of economic agents. The course will also discuss the concept of the general equilibrium in a pure exchange economy.

### Macroeconomics II

This course is the continuation of Macroeconomics I, and covers basic models used to study macroeconomic phenomena. Students learn models that help them understand the economic behavior of agents in the long run, and under uncertainty. The course will focus on consequences of savings and capital accumulation in the long-run growth of modern economies, as well as the role of expectations in economic decisions. A brief introduction to open economy models will be made, too.

### Government and Market

The purpose of this course is to understand the government's role in the economies of democratic countries today. In addition, students will learn the basics of economic thinking,

considered highly important in applied work, in addition to ways of applying economic theories to real-life phenomena.

### Introduction to Applied Econometrics

The course seeks to provide an understanding of basic econometrics. Students should be able to formulate and conduct basic econometrics research utilizing statistical computer programs (Stata and EViews) by the end of the course. Students should also develop a solid grasp of econometrics, as well as the knowledge for pursuing studies in more advanced topics that are necessary for independent research. The second half of the course will be spent introducing time series econometrics.

### Local Public Finance

The Local Public Finance course aims to develop an understanding of local governments' fiscal activities. For example, the course deals with the decentralization theorem and its limitations; optimal size of local authorities; gains from fiscal decision-making at local levels; topics of local tax revenue and user charges; and intergovernmental fiscal relations. It also introduces viewpoints from both public finance theory and public choice approach.

### Economic and Fiscal Reform in Japan

This course will cover and discuss issues/problems in formulating economic policy and reforming public finance in Japan. To achieve sustainable growth amid population decline, fiscal reform and an economic growth strategy are indispensable and require concurrent promotion. Topics for discussion include current conditions and weaknesses in Japan's economy, as well as characteristics of Japan's fiscal situation and recent fiscal policy reforms. Of particular importance are structural reforms of expenditures, such as social welfare, public works, and governmental loan programs.

### International Trade

This course is an introduction to international trade and commercial policy. It begins with comparative advantage theory, and shifts to income distribution, the roles of economies of scale, and imperfect competition in the context of trade. The discussion on trade policy consists of three parts: tariff and non-tariff instruments, trade policy in developing countries, and strategic trade policy. In particular, trade policy in developing countries will be analyzed, along with various experiences undergone by developing and transitional economies. Lastly, the evolution of regional free trade agreements and the new world trading system under the WTO will be reviewed.



---

### Development Economics

This course outlines the theories, histories, and experiences of economic development in various countries and regions, to develop an understanding of the issues/ problems. This course covers recent discussions in the field of development economics such as: 1) the role of institutions and governance in economic development; 2) poverty analysis and distributional welfare analysis; 3) human capital theory and rigorous econometric impact evaluation; and 4) research on the effectiveness of development aid.

### Human Resources Management

The purpose of this course is to assist students in acquiring the knowledge and developing the skills necessary for the effective management of human resources within organizations. They will be introduced to conceptual frameworks and diagnostic tools to be utilized for understanding and analyzing the various inter-related activities and functions that are the foundation of an effective human resource management system. Through several case studies, they will develop a solid understanding of human resource management practices, along with its corresponding theories and models.

## Brief Course Descriptions (Practicum Segment)

### Customs Law

This course is intended to provide an overview of customs-related laws, including those of Japan, by focusing on various aspects of customs procedures and formalities. It is also intended to provide a basic grasp of international conventions, which constitute an integral part of customs-related laws, such as the Revised Kyoto Convention, Harmonized System Convention, and the WTO Valuation Agreement, among others.

### Practicum in Customs Administration I

This course aims to enhance participants' knowledge of international theories and trade and Customs practices, including the activities of the WTO, WCO, and UN/CEFACT. Participants will learn about the various aspects of border control and trade facilitation including the SAFE Framework, the 24 hour rule, C-TPAT, 10+2, Risk Management, Authorized Economic Operators, and EDI and will examine the role and importance of Customs in the international supply chain.

### Practicum in Customs Administration II

This course is intended to deepen participants' understanding of the operational activities of Customs, including the use of modern techniques, and it will help participants examine how their own activities can be improved in the future. The course will cover a number of important concepts and issues related to Customs operations including simplification of Customs procedures, cargo control, border management, single window, HS classification, post clearance audit, rules of origin, temporary admission, refund and exemption systems, and appeal system.

---

### Practicum in Customs Administration III

This course aims to provide students with the necessary knowledge and practical problem-solving skills required for customs policymakers and developers. Topics covered include: efforts to implement global standards under the WCO, WTO, and FTAs; trade facilitation, safety, and security; the WCO Diagnosis Framework; and organizational management and legislation of customs in Japan. A field/ study trip to regional customs administrations is also organized. In the latter part of this course, each student will be required to prepare a report on their plan for reforming, modernizing, and developing their respective customs administration systems, which will be discussed in class.

### Intellectual Property Rights Enforcement at Border

The proliferation of IPR-infringing goods has increasingly threatened our health and safety, while hampering economic development. In order to reverse such trends, customs -- as an enforcement authority -- takes a key role in border IPR enforcement. This course aims to provide specialized knowledge in border IPR enforcement by customs authorities. Topics to be covered include TRIPS Agreement, copyrights, trademarks, patent rights, policy on counterfeits and piracy, and rights holders' activities. Students will learn basic international/ national legal IPR frameworks and the operations of Japanese customs authorities.





# 2 About GRIPS

## Academic Calendar for AY2011-2012

Term	Month	SUN	MON	TUE	WED	THU	FRI	SAT	Note	
Fall	SEPTEMBER	4	5	6	7	8	9	10	Sep. 7 Orientation for WCO scholars	
		11	12	13	14	15	16	17	Sep. 7 - 30 September program for WCO scholars	
		18	19	20	21	22	23	24		
	OCTOBER	25	26	27	28	29	30	1	Oct. 3 Entrance Ceremony and Orientation	
		2	3	4	5	6	7	8	Oct. 3 - 4 Initial registration for Fall Term and Fall (Session I)	
		9	10	11	12	13	14	15	Oct. 5 Classes for Fall Term and Fall (Session I) begin	
		16	17	18	19	20	21	22	Oct. 5 - 18 Add/drop for Fall Term & Fall (Session I)	
		23	24	25	26	27	28	29	Oct. 19 - 25 Withdrawal for Fall Term & Fall (Session I)	
	NOVEMBER	30	31	1	2	3	4	5		
		6	7	8	9	10	11	12		
		13	14	15	16	17	18	19		
	DECEMBER	20	21	22	23	24	25	26	Nov. 24 - 25 Initial registration for Fall (Session II)	
27		28	29	30	1	2	3	Dec. 1 Classes for Fall (Session II) begin		
4		5	6	7	8	9	10	Dec. 1 - 9 Add/drop for Fall (Session II)		
11		12	13	14	15	16	17	Dec. 12 - 14 Withdrawal for Fall (Session II)		
JANUARY	18	19	20	21	22	23	24			
	25	26	27	28	29	30	31	Dec. 29 - Jan. 3 New Year holidays		
	1	2	3	4	5	6	7			
	8	9	10	11	12	13	14			
Winter	FEBRUARY	15	16	17	18	19	20	21		
		22	23	24	25	26	27	28	Jan. 31 - 31 Initial registration for Winter Term	
		29	30	31	1	2	3	4	*Interterm Period: Feb. 1 - 3]	
		5	6	7	8	9	10	11	Feb. 4 - 5 Field Trip Feb. 6 Classes for Winter Term begin	
	MARCH	12	13	14	15	16	17	18	Feb. 6 - 14 Add/drop Period for Winter Term	
		19	20	21	22	23	24	25	Feb. 15-17 Withdrawal for Winter Term	
		26	27	28	29	1	2	3		
		4	5	6	7	8	9	10	Mar. 6 Grade release (Fall)	
	Spring	APRIL	11	12	13	14	15	16	11	
			18	19	20	21	22	23	24	
			25	26	27	28	29	30	31	*Interterm Period: April 2 - 4]
			1	2	3	4	5	6	7	Apr. 3 - 4 Initial registration for Spring Term & Spring (Session I)
MAY		8	9	10	11	12	13	14	Apr. 5 Classes for Spring Term & Spring (Session I) begin	
		15	16	17	18	19	20	21	Apr. 5 - 18 Add/drop for Spring Term & Spring (Session I)	
		22	23	24	25	26	27	28	Apr. 19 - 25 Withdrawal for Spring Term & Spring (Session I)	
		29	30	1	2	3	4	5		
JUNE		6	7	8	9	10	11	12	May 10 Grade release (Winter)	
		13	14	15	16	17	18	19		
		20	21	22	23	24	25	26	May. 24 - 25 Initial registration for Spring (Session II)	
		27	28	29	30	31	1	2	May. 31 Classes for Spring (Session II) begin	
JULY	3	4	5	6	7	8	9	May. 31 - Jun. 8 Add/drop for Spring (Session II)		
	10	11	12	13	14	15	16	Jun. 11 - 13 Withdrawal for Spring (Session II)		
	17	18	19	20	21	22	23			
	24	25	26	27	28	29	30			
Summer	AUGUST	1	2	3	4	5	6	7		
		8	9	10	11	12	13	14		
		15	16	17	18	19	20	21	*Interterm Period: Jul. 26 - 30]	
		22	23	24	25	26	27	28	Jul. 24 - 25 Initial registration for Summer Term	
	SEPTEMBER	29	30	31	1	2	3	4	Jul. 31 Classes for Summer Term begin,	
		5	6	7	8	9	10	11	Jul. 31 - Aug. 6 Add/drop Period for Summer Term	
		12	13	14	15	16	17	18		
		19	20	21	22	23	24	25		
	SEPTEMBER	26	27	28	29	30	31	1	Aug. 29 Grade release (Spring and Summer)	
		2	3	4	5	6	7	8		
		9	10	11	12	13	14	15		
		16	17	18	19	20	21	22	Sep. 14 Graduation Ceremony	
23		24	25	26	27	28	29			
30										

Course Registration (Please note that schedules are subject to change.)  
 Initial registration  
 Withdrawal  
 Add/drop  
 No class (Sundays, National Holidays, and New Year Holiday)

## Message from the Dean

GRIPS was founded in 1997 as a stand-alone national graduate university focusing on policy studies. Future policy leaders and policy researchers from around the world gather here, making GRIPS an international hub for public policy research and education.

We offer Master's and Doctoral programs covering a broad range of areas, from economics, political science, public administration, and international relations to social engineering and mathematical science, and we encourage students and faculty to engage in interdisciplinary research.

GRIPS has a very international character in every respect, with more than two thirds of our students coming from overseas, from over 80 nations to date. Our faculty is also international and includes academics, public officials, and executives from private companies. The diverse backgrounds of our faculty create an ideal environment for students pursuing policy studies.

Reflecting the diverse backgrounds of our students and faculty, GRIPS aspires for cross-fertilization of academic disciplines and their application to real policy making and policy analysis. We welcome young people from all over the world to come to GRIPS to learn more about Japan and to engage in productive communication with each other. GRIPS' mission is to train and educate young, talented people to become national leaders with a genuine sense of social responsibility.

The Public Finance Program is an integral part of this mission. I hope you will join us.

Dean and Vice President  
**Tatsuo Oyama**




Picture: Mr. Masao Nishikawa



## GRIPS at a glance

<b>OUR MISSION</b>	<ul style="list-style-type: none"><li>• Cultivate future leaders in policymaking</li><li>• Serve as an international center for policy research</li></ul>
<b>STUDENT LIFE</b>	<ul style="list-style-type: none"><li>• Numerous scholarships available</li><li>• GRIPS Fellowship available for doctoral students</li><li>• Spacious campus located in the heart of Tokyo (Roppongi)</li><li>• Modern &amp; comfortable dormitories</li><li>• Global community and network (from over 50 countries)</li><li>• Field trips and various cultural programs offered</li></ul>
<b>ACADEMIC</b>	<ul style="list-style-type: none"><li>• 1- and 2-year master's programs (15 programs)</li><li>• Integrated 5-year doctorate program</li><li>• Various doctorate programs (6 programs)</li><li>• Distinguished faculty</li><li>• Classes taught fully in English</li></ul>
<b>FUTURE CAREERS</b>	<ul style="list-style-type: none"><li>• Policy-making career tracks (government official, private sector, international organizations, academia, etc.)</li><li>• Active alumni for international networking</li></ul>

## Programs offered at GRIPS for international students

For details, visit: [http://www.grips.ac.jp/pstudents/inter\\_programs/index.html](http://www.grips.ac.jp/pstudents/inter_programs/index.html)

## Brief History of GRIPS

- 1977** Graduate School of Policy Science (GSPS) established at Saitama University; the predecessor of GRIPS
- 1997** National Graduate Institute for Policy Studies (GRIPS) established
- 1999** Relocated to Wakamatsu-cho campus in Tokyo (Shinjuku)
- 2005** Relocated to current campus in Roppongi



# 3 Student Support

One unique aspect of GRIPS is our extensive support system for assisting students in their daily living. We consider this aspect of your lives to be every bit as important as your academic life, especially for foreign scholars unfamiliar with Japan. As international students have comprised, on average, about 60% of the GRIPS student body over the last 10 years, we have developed comprehensive services to assist students in their day-to-day living.

The Student Office organizes orientation programs for incoming students and assists arriving international students in getting organized and settled in Japan. It also organizes a number of social events and activities, including field trips and concerts. The Student Office also functions as a hub to promote meaningful interaction and understanding between Japanese and foreign nationals.

## Faculty

GRIPS has approximately 70 full-time faculty members from a variety of backgrounds. Many of them have served as central and local government officials, diplomats, bankers or business executives. This enables an effective combination of rigorous academic courses complemented by professional expertise and experience.

For more on our faculty members, please see <http://www.grips.ac.jp/about/directory.html>.

## Accommodation

Accommodation is provided in the Tokyo International Exchange Center (TIEC), operated by the Japan Student Services Organization (JASSO), in GRIPS International House, or in private apartments recommended by the GRIPS Student Office.

### Tokyo Academic Park Residence Halls

In the bayside area, built in 2001 by the Ministry of Education, Culture, Sports, Science and Technology (MEXT)  
Room Types: Single, Couple, Family  
Available until March 2012



### GRIPS International House I

In Nakano, built in 2009  
Room Types: Single, Couple



### GRIPS International House II

In Nakano, built in 2009  
Room Types: Single, Couple





# 4 Admissions

## Resources

### Academic Writing Center

Complements formal programs of study with instruction in fundamental areas of academic English expression through:



- writing workshops
- individual consultations by appointment
- style guides and templates for independent study, research, and policy papers
- English and academic skills classes

### Center for Japanese Language Learning

The center supports Japanese language learning of students who lack Japanese language proficiency for daily living and study. The purpose is to help students achieve greater competence in comprehension and speaking. The center also facilitates cultural and traditional experiences.



### Library

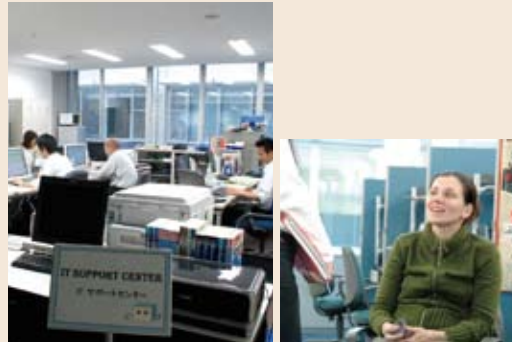
- Extensive collection of publications in the field of policy studies, collected from around the world
- Collection contains over 140,000 volumes, including reference books, statistical collections, working papers, and government documents
- Large collections of periodicals that include more than 4,000 journals, many of which are available online
- Well-trained staff are equipped to respond to research-related requests



## Facilities

### Student Rooms and Computers

- Each student is provided with a study space and laptop computer, accessible 24 hours a day
- A computer help desk is open to all students during regular working hours



### Health Services Center

- In-house health clinic
- Nurse on duty daily, doctor available several days a week
- Provides medical advice, basic medical examinations
- Will refer to an appropriate hospital or specialist when necessary



### Fitness Center

- Running machines
- Training equipment
- Showers
- TV & DVD for exercises
- Free use by students, faculty, and staff



Picture: Mr. Masao Nishikawa

The Secretary General of the WCO invites nominations every year from a select number of WCO member customs administrations. Candidates must be chosen and nominated by the customs administrations in their home country to apply for the WCO scholarship. Although limited in numbers, the program may also admit students who obtain their own funding (other than the WCO scholarship), including any scholarships provided by the student's home country.



## Eligibility Criteria

Irrespective of the funding source, eligibility for admission to the Public Finance Program (Customs Course) consists of a bachelor's degree or its equivalent from a recognized, accredited university of the highest standard, as well as certifiable good health. Following enrollment, you will be required to take an annual medical examination that is administered by GRIPS. In addition, applicants must:

- be active government officials in developing countries, with at least 2 years work experience in customs policy and administration in their home countries, and preferably below 35 years of age as of April 1, 2012. Preference will be given to those who show promise in continuing their career in customs policy and administration upon returning to their home countries.
- be proficient in English to the order of an IBT 79 (CBT 213) or above, or an IELTS score of 6.0 or above.

We first screen applicants in terms of the above criteria, after which they are evaluated from the following viewpoints:

- Academic record and intellectual distinction
- Personal characteristics and motivation and evidence of leadership
- Work experience and promise for management and career growth

For the awardees of the WCO scholarship, GRIPS will make a short list of candidates that will be sent to the WCO for the final selection.

## What the WCO Scholarship Covers

- A monthly stipend (JPY155,000 as of 2011) is provided for the 12-month period of the program. This is intended to cover living expenses such as food, clothing, and other daily expenses, as well as accommodations, transportation, medical treatment, insurance, and various miscellaneous expenses related to your study at GRIPS. This stipend is fixed and cannot be increased to cover family members. The amount of your stipend may change in accordance with local economic conditions.
  - Accommodation and daily allowance will be provided for September of 2012, preceding the monthly stipend that begins in October
  - Application, admission, and tuition fees (paid directly to GRIPS by WCO)
  - A book allowance of 75,000 yen to cover your textbook expenses
  - Round-trip economy-class air tickets between your home country and Japan
- Should your performance fall below a certain critical standard (e.g., failing a required course, or one that is important in the curricula), or you are unable to continue with schoolwork for any reason whatsoever, we may terminate provision of the scholarship, even during the school year. In the event of such an occurrence, you may also not be provided with a return air ticket.

## How to Apply

We are currently accepting applications for the Public Finance Program (Customs Course) online through the GRIPS website. When applying online, applicants must submit the following documentation in hard copy: university transcript, certificate of university diploma, and certificate of English proficiency. The application deadline is usually sometime in February. For details, please refer to:

<http://www.grips.ac.jp/pstudents/admissions/pf.html>.

# 5 Alumni

One of the greatest resources and joys of studying at GRIPS is the diversity of the student community. The connections you make at GRIPS are a valuable part of your degree. The GRIPS Alumni Network will ensure they are lifetime bonds by keeping you in touch with fellow alumni and the school.

As a GRIPS graduate, you join an impressive network of around 3,000 alumni who are actively shaping future policies in more than 80 countries around the world. We offer a variety of ways to remain engaged with GRIPS and strengthen your ties with fellow alumni. These include alumni reunions, seminars, a searchable alumni directory and online networking opportunities utilizing social media such as Facebook and LinkedIn.

## Alumni of the Public Finance Program (Customs Course)

Since its launch in 2000, one hundred WCO scholars have graduated from the Public Finance Program's Customs Course with Master's degree (as of July 2011). All were mid-career customs officials when first admitted into the program. The majority of WCO scholars who graduate return to their home countries and pursue careers in the field of customs (As of July 2011, around 98% of our graduates are still working in customs-related government agencies in their home countries)



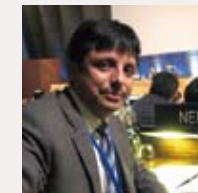
## Voices of the Alumni



### Abhai Kumar Srivastav (India '01)

Current Position: Additional Commissioner  
Affiliation: Gujarat Customs Zone, Ahmedabad, India

I truly relished my stay in Japan, where I witnessed one of the most civilized societies and probably the society most nicely predisposed towards foreigners. My educational stint at GRIPS helped me to realize the value of a multi-disciplinary approach, and understand the links between policy issues, administration, and implementation strategies. My experience at GRIPS helped me immensely in performing some very challenging tasks as a Deputy Secretary in the Ministry of Finance in India.



### Janak Raj Sharma (Nepal '08)

Current Position: Chief Tax Officer, Inland Revenue Department, Taxpayer Service Office Newroad, Affiliation: Ministry of Finance

The year-long intensive program was well designed and has been instrumental in my understanding of economics and in modern customs. The program combines theoretical knowledge with the practical, enabling students to apply what they learned. At GRIPS, you will make invaluable friendships with people from all over the world, while enjoying the wonderful culture of Japan, and experiencing its incredible economic transformation. GRIPS is a great place to start building an excellent future!



### Sok Sovithyea (Cambodia '04)

Current Position: Acting Chief, Customs Technique Office, Department of Planning, Technique, and International Affairs, Affiliation: General Department of Customs and Excise (GDCE)

I am very proud to have obtained a master's degree in public finance from GRIPS. I acquired not only academic knowledge in public finance, but also learned a great deal on how to interact with people from different backgrounds, cultures, and countries. During my studies, I participated in numerous school activities, workshops, and events organized by GRIPS, which enabled me to meet friends, professors, and staff members of widely divergent nationalities, all of whom were very helpful, kind and, ultimately, unforgettable. Back here in Cambodia, I can utilize what I learned and experienced in Japan. I feel more confident in my job, in expressing ideas, and dealing with different people. I now realize that GRIPS was the turning point in my career development.



### Ernest Sigande (Zambia '05)

Current Position: Assistant Commissioner – Audit and Business Risk Section  
Affiliation: Zambia Revenue Authority

A year away from home can be very daunting. However, you quickly come to realize that GRIPS is a home away from home when you meet your Japanese hosts and fellow students. The diverse nature of the students at GRIPS is very exciting. I learned so much from interacting with all the people from different cultures, economic backgrounds, and professional experiences. I enjoyed the mixture of class lectures backed by a number of business and cultural visits that made learning more real and satisfying. The Public Finance program exposed me to a wider range of content, as well as the context of macroeconomic principles that affect the performance of our economy and, consequently, the role of customs and tax administration. Therefore, my policy paper was directed at proposing methods of integrating tax and customs administration to achieve an integrated compliance strategy